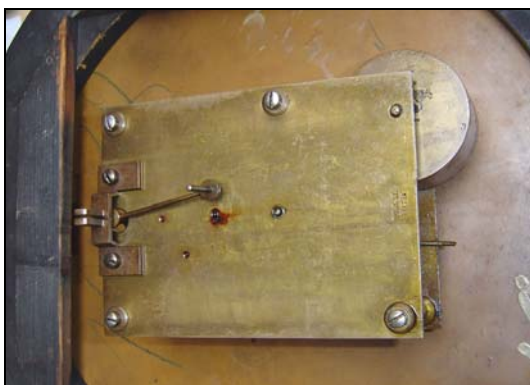


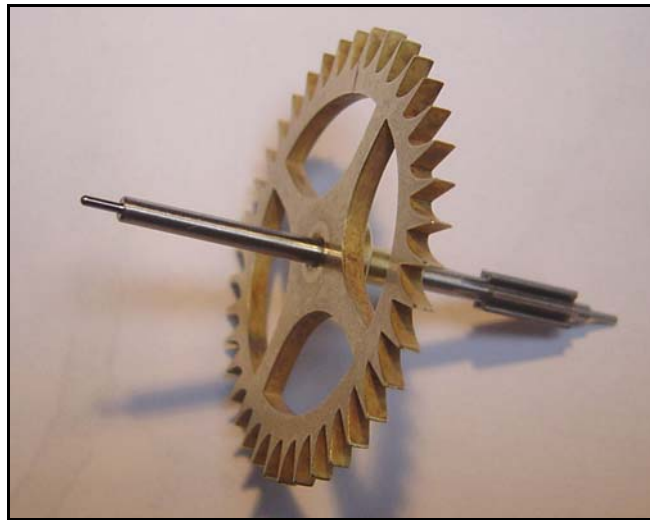
This is a nice English dial Railway clock made for the Midland Railway and probably supplied as one of a batch by Eccles & Son of Liverpool. The clock was made by Winterhalder & Hofmeier in Schwarzenbach, Germany, about 1900 in the English dial clock style. The clock is complete with an old British Railways asset tag and was rescued by a local railway enthusiast in the 1960's, when one of BR Midland line signal boxes was closed under the Beeching axe. The clock has been a reliable performer since then, but has suffered slightly from the lack of regular servicing. I was asked by the owner to restore the movement back to working condition.



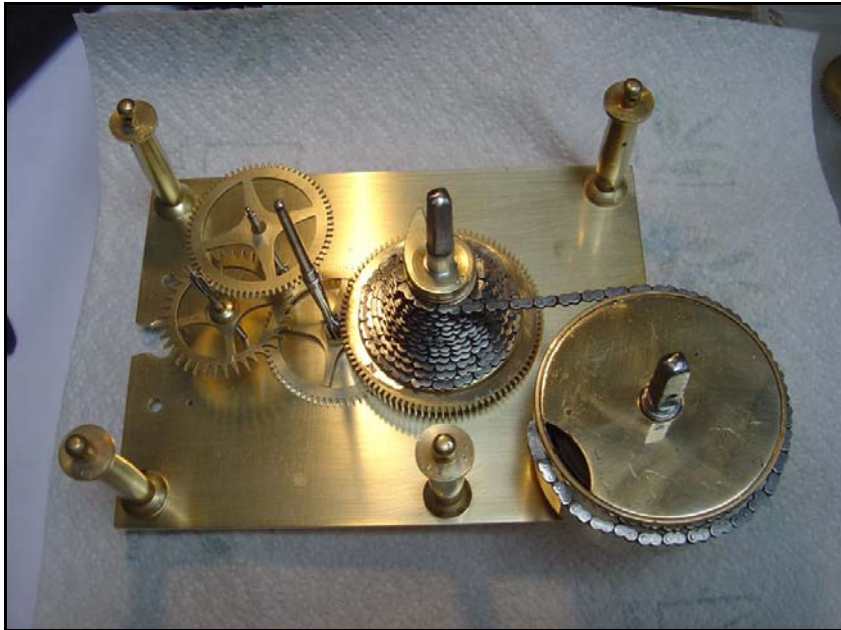
The dial and case do need work and I think the owner will attend to this in the future. The chain fusee movement is very well made but in desperate need of cleaning.



The clock was found to have two faults; the original main spring was broken at the winding arbor end and found to be very tired. The escape wheel pinion was also badly worn, the associated wheel had been moved to rectify this once before during a past repair, and so this could not be done again. The escape wheel pivots were very badly worn and so the decision was made to fit a new pinion and arbor. The old parts were returned to the owner to be kept with the clock as part of its history.



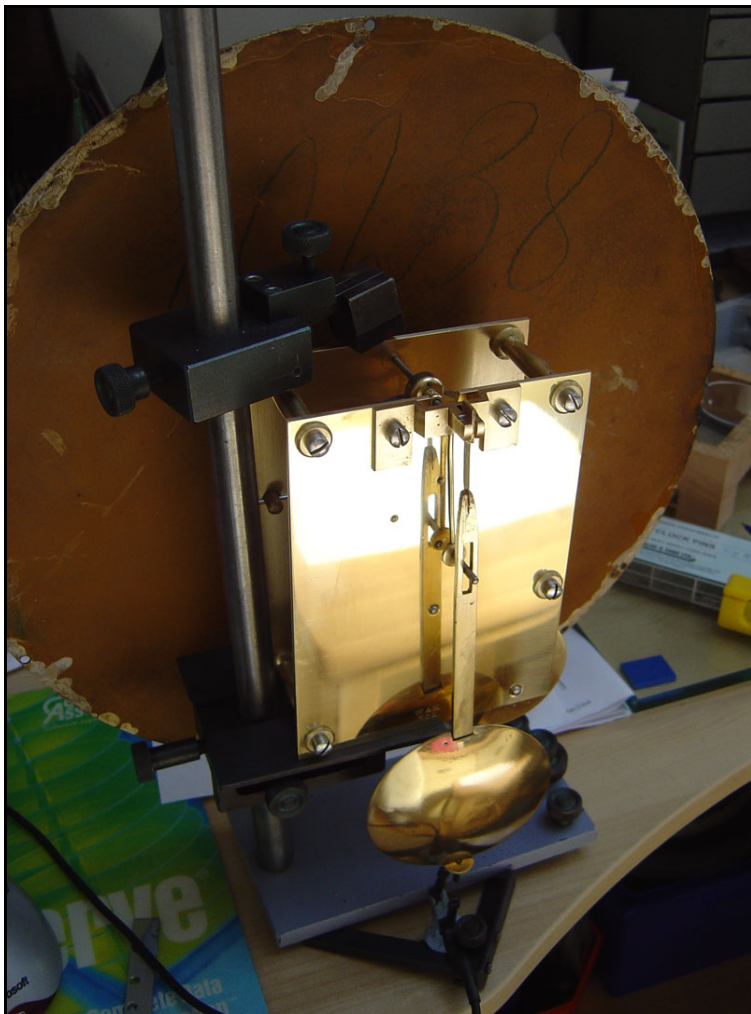
The clock has now been repaired and ultrasonically cleaned and is ready for assembly.



Train count

Escape Wheel 38/6
3rd Wheel 70/7
Centre wheel 70/8
Fusee 96

Movement rate
0.4060151 seconds
per beat



The clock is now
assembled, the
lubrication has been
done and the rate is
being adjusted with a
Microset computer clock
timer